



Part No. ALL48250
ALL48252

Power Steering Pump With Pulley

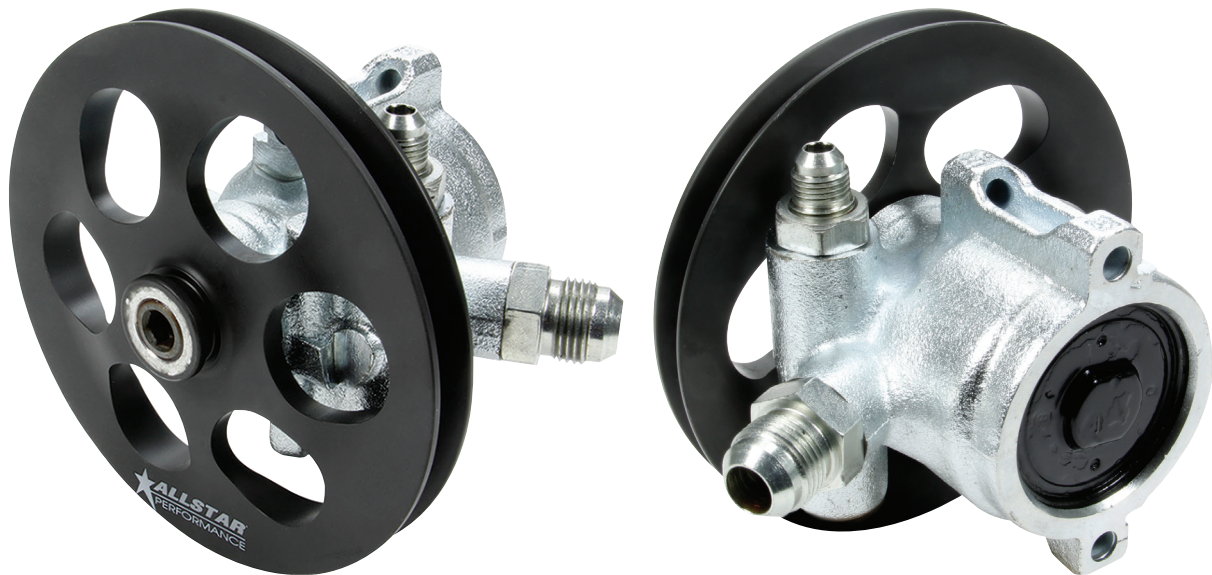
Steel Type II style power steering pump with 6" diameter pulley provides smooth consistent steering. Pump is rated at 3 gallons per minute and produces up to 1300psi at a recommended pump rpm range of 1500-6500. Pump features a 6AN pressure fitting and a 10AN return fitting.

Part No. Description

ALL48250..... Pump With Pulley

ALL48252*..... Pump With Pulley For 1/2" Belt

* Designed for use with 1/2" wide industrial grade belt used with ALL31094 and ALL31095 1:1 pulleys.



Replacement Part:

ALL48251..... Pulley For ALL48250

ALL48253..... Pulley For ALL48252

ALL99287..... -10AN Return Fitting

ALL99288..... -6AN Pressure Fitting

REV080317

Allstar Performance 8300 Lane Dr., Watervliet, MI 49098
Phone: (269) 463-8000 Fax: (800) 772-2618 www.allstarperformance.com